

**YSGOL DYFFRYN OGWEN
FFORDD COETMOR
BETHESDA**

**PRIFATHRO/ HEADMASTER
ALUN LLWYD, M.A.**

**☎: 01248 600291
Dyddiad/Date 10/1/13**

ADRODDIAD BLYNYDDOL Y LLYWODRAETHWYR I RIENI 2012

Annwyl Rieni,

Mae crynodeb o Adroddiad Blynyddol y Llywodraethwyr i Rieni am y flwyddyn ysgol 2011-2012 ar gael ar safwe yr ysgol www.ysgoldyffrynogwen.org Mae croeso i chwi gysylltu â'r ysgol os dymunwch dderbyn copi llawn o'r adroddiad.

Yn gywir,

Nerys Williams
Clerc y Llywodraethwyr

GOVERNORS ANNUAL REPORT TO PARENTS 2012

Dear Parents,

A summary of the Governors Annual Report to Parents for the 2011-12 school year is available on the school's website www.ysgoldyffrynogwen.org A full copy of the report is available from the school.

Yours sincerely,

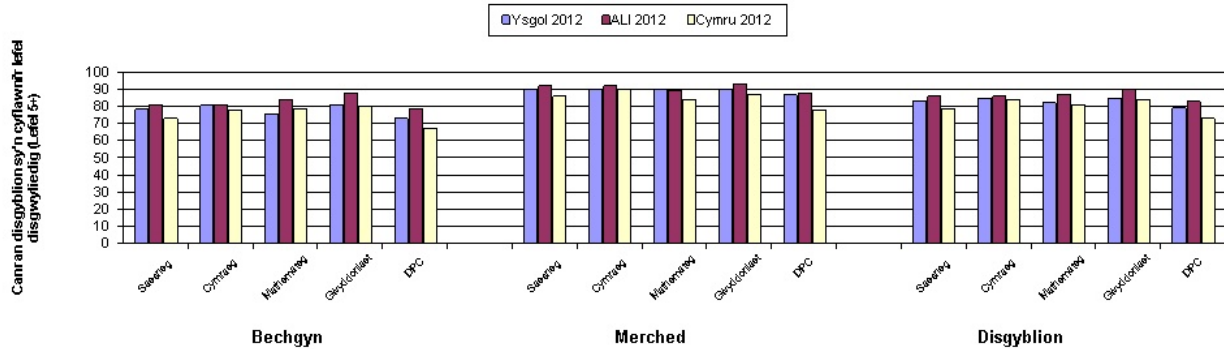
Nerys Williams
Clerk to the Governors

CORFF LLYWODRAETHOL 2011-2012 GOVERNING BODY	
CYNYRCHOLWYR AWDURDOD ADDYSG GWYNEDD GWYNEDD EDUCATION AUTHORITY REPRESENTATIVES	CYFNOD YN DOD I BEN TERM ENDS
Cyng Gwen Griffith	31/8/2012
Cyng Dyfrig Jones	31/8/2012
Dr Paul Rowlinson (Is Gadeirydd/ <i>Vice Chairperson</i>)	31/8/2012
Mr Arwyn Oliver	31/8/2012
CYNYRCHOLWYR Y RHINIEN/ PARENTS' REPRESENTATIVES	
Dr Dafydd Roberts	31/8/2012
Ms Sharon Breward	31/8/2012
Mr Iwan Jones	31/8/2012
Ms Emily Irvine	31/8/2012
Mrs Morfudd Roberts	31/8/2012
CYNYRCHOLWYR STAFF ADDYSGU /TEACHING STAFF REPRESENTATIVES	
Mr Dewi Gwyn	31/8/2012
Mr Richard Smith	31/8/2012
CYNYRCHOLYDD STAFF ATEGOL /NON TEACHING STAFF REPRESENTATIVE	
Mr Dafydd Harris Davies	31/8/2012
AELODAU CYFETHOLEDIG/ CO-OPTED MEMBERS	
Mr Nigel Beidas	31/8/2012
Mr Walter Williams	31/8/2012
Mr Ieuan Wyn	31/8/2012
Cyng Godfrey Northam (<i>Cadeirydd/ Chairperson</i>)	31/8/2012
PRIFATHRO/HEADTEACHER	
Mr Alun Llwyd	
CLERC/ CLERK	
Mrs Nerys Williams	
<p>Cynhelir yr etholiad nesaf ar gyfer cynrychiolwyr y rhieni ym Medi 2016. <i>The next election for parents' representatives will be held in September 2016.</i> Gellir cyfeirio unrhyw ohebiaeth i sylw'r clerc neu'r cadeirydd drwy'r ysgol. <i>Any correspondence for the attention of the clerk or chair may be addressed to the school.</i></p>	
PRESENOLDEB 2011-2012 ATTENDANCE	
PRESENOLDEB /ATTENDANCE	91.9%
TARGED PRESENOLDEB 11/12 ATTENDANCE TARGET	92.5%

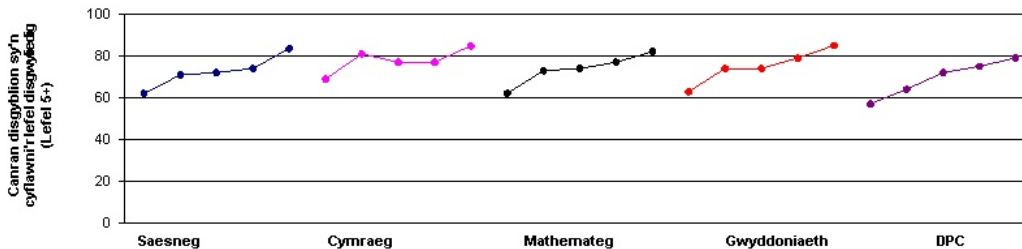
**Gwybodaeth gymharol yr ysgol: Aseidiadau'r Cwricwlwm Cenedlaethol 2012 gyda meincnodi
Cyfnod Allweddol 3**

Canran y bechgyn, merched a disgyblion sy'n cyflawni'r lefel disgwylidig o leiaf (Lefel 5+):

	Bechgyn			Merched			Disgyblion		
	Ysgol 2012	ALI 2012	Cymru 2012	Ysgol 2012	ALI 2012	Cymru 2012	Ysgol 2012	ALI 2012	Cymru 2012
Saesneg	78	81	73	90	92	86	84	86	79
Cymraeg	81	81	78	90	92	90	85	86	84
Mathemateg	76	84	79	90	89	84	82	87	81
Gwyddoniaeth	81	88	80	90	93	87	85	90	84
DPC	73	79	67	87	88	78	79	83	73



Perfformiad yr ysgol dros amser (2007 - 2012)



Gwybodaeth gyd-destunol

Wedi'i meincnodi yn erbyn ysgol â chanran debyg o ddisgyblion sy'n gymwys i gael Prydau Ysgol am Ddim Nodwyd canlyniadau'r ysgol yn y blychau llwyd. Mae penawdau'r colofnau yn cyfeirio at:

- Chwarter 1 Mae'r ysgol ymhlith y 25% uchaf
- Chwarter 2 Mae'r ysgol ymhlith y 50% uchaf ond nid y 25% uchaf
- Chwarter 3 Mae'r ysgol ymhlith y 50% isaf ond nid y 25% isaf
- Chwarter 4 Mae'r ysgol ymhlith y 25% isaf

Grŵp Prydau Ysgol am Ddim

Mwy na 15 y cant a hyd at 20 y cant yn gymwys i gael PYD

	Chwarter 4	Chwarter Isaf	Chwarter 3	Canolrif	Chwarter 2	Chwarter Uchaf	Chwarter 1
Saesneg		76		81		82	84
Cymraeg		82	85	85		88	
Mathemateg		78		80	82	82	
Gwyddoniaeth		82		84		85	85
DPC		68		72		75	79

Mae'r meincnodau wedi cael eu cyfrifo gan ddefnyddio cyfartaledd tair-mlynedd data Prydau Ysgol am Ddim.

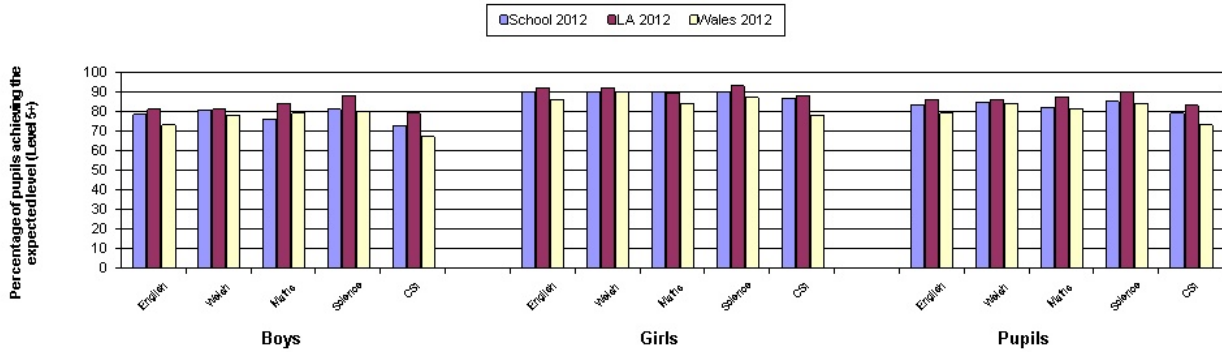
Nodiadau:

- Mae'r ffigurau ar gyfer Cymraeg yn cyfeirio at gyrhaeddiad Cymraeg iaith gyntaf yn unig
- DPC = Dangosydd Pynciau Craidd. I sicrhau DPC, mae'n rhaid i ddisgybl gyflawni o leiaf lefel 5 disgwylidig mewn Mathemateg a Gwyddoniaeth a naill ai Cymraeg neu Saesneg iaith gyntaf
- Os nad oedd unrhyw ddisgyblion yn gymwys i'w hasesu mewn pwnc ar gyfer blwyddyn benodol bydd y graff yn terfynu a dangos blwch ar gyfer y flwyddyn honno.

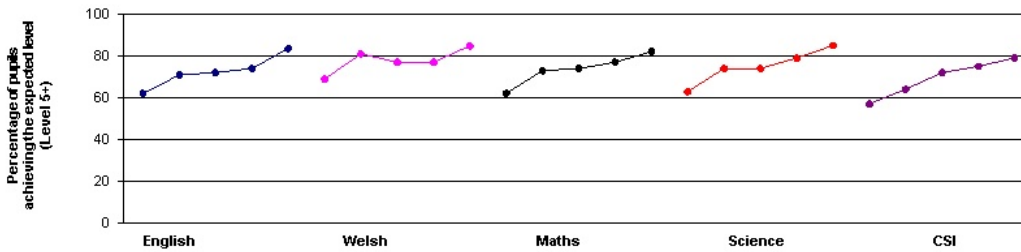
School comparative information: National Curriculum Assessments 2012 with benchmarking
Key Stage 3

Percentage of boys, girls, and pupils achieving at least the expected level (Level 5+):

	Boys			Girls			Pupils		
	School 2012	LA 2012	Wales 2012	School 2012	LA 2012	Wales 2012	School 2012	LA 2012	Wales 2012
English	78	81	73	90	92	86	84	86	79
Welsh	81	81	78	90	92	90	85	86	84
Maths	76	84	79	90	89	84	82	87	81
Science	81	88	80	90	93	87	85	90	84
CSI	73	79	67	87	88	78	79	83	73



School Performance over time (2007 - 2012)



Contextual Information

Benchmarked against schools with a similar percentage of pupils eligible for free school meals.

School's results shown in greyed boxes. Column headings refer to...

- Quarter 1 School is in the top 25 per cent.
- Quarter 2 School is in the top 50 per cent but not the top 25 per cent.
- Quarter 3 School is in the bottom 50 per cent but not the bottom 25 per cent.
- Quarter 4 School is in the bottom 25 per cent.

Free School Meal Group

More than 15 per cent and up to 20 per cent eligible for FSM

	Quarter 4	Lower Quartile	Quarter 3	Median	Quarter 2	Upper Quartile	Quarter 1
English		76		81		82	84
Welsh		82	85	85		88	
Maths		78		80	82	82	
Science		82		84		85	85
CSI		68		72		75	79

The benchmarks have been calculated using a three-year average for Free School Meal data.

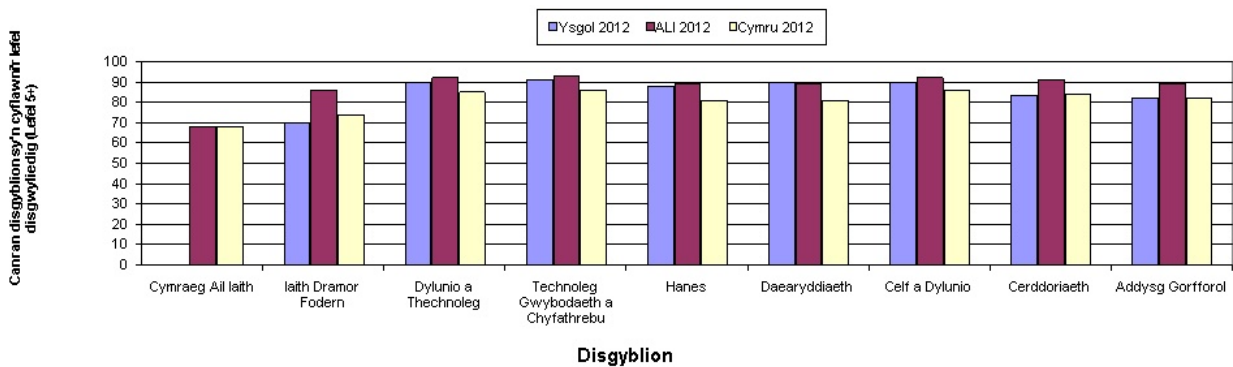
Notes:

1. Figures for Welsh refer to attainment in Welsh first language only.
2. CSI = Core Subject Indicator. To achieve the CSI a pupil must achieve at least the expected level 5 in both Mathematics and Science and either English or Welsh first language.
3. If there were no pupils eligible for assessment in a subject for a particular year the graph will discontinue and show a gap for that year.

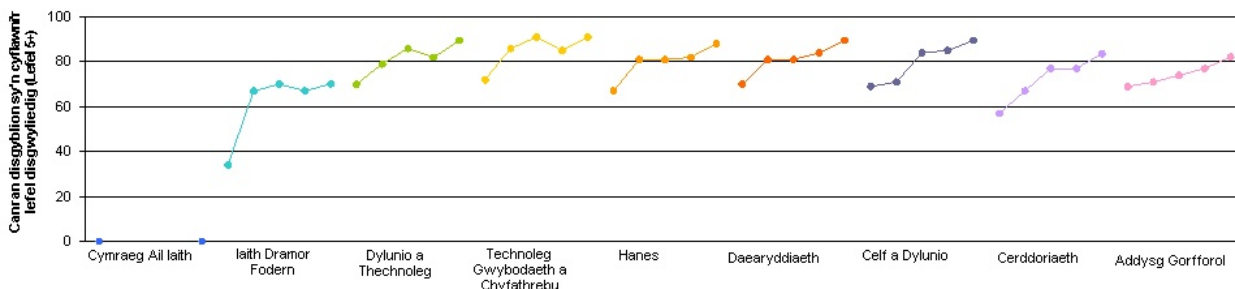
**Gwybodaeth gymharol yr ysgol: Aseidiadau'r Cwricwlwm Cenedlaethol 2012 gyda meincnodi
Cyfnod Allweddol 3**

Canran disgyblion sy'n cyflawni'r lefel disgwylidig (Lefel 5+)

	Bechgyn			Merched			Disgyblion		
	Ysgol 2012	ALI 2012	Cymru 2012	Ysgol 2012	ALI 2012	Cymru 2012	Ysgol 2012	ALI 2012	Cymru 2012
Cymraeg Ail iaith	0	58	59	0	84	78	0	68	68
Iaith Dramor Fodern	57	81	67	87	92	83	70	86	74
Dylunio a Thechnoleg	84	87	79	97	97	91	90	92	85
Technoleg Gwybodaeth a	89	90	82	93	97	91	91	93	86
Hanes	84	85	76	93	94	87	88	89	81
Daearyddiaeth	86	86	76	93	94	86	90	89	81
Celf a Dylunio	84	88	78	97	97	93	90	92	86
Cerddoriaeth	76	86	78	93	95	89	84	91	84
Addysg Gorrfforol	81	88	82	83	90	82	82	89	82



Perfformiad yr ysgol dros amser (2007 - 2012)



Gwybodaeth gyd-destunol

Wedi'i meincnodi yn erbyn ysgol â chanran debyg o ddisgyblion sy'n gymwys i gael Prydau Ysgol am Ddim Nodwyd canlyniadau'r ysgol yn y blychau llwyd. Mae penawdau'r colofnau yn cyfeirio at:

- Chwarter 1 Mae'r ysgol ymhlith y 25% uchaf
- Chwarter 2 Mae'r ysgol ymhlith y 50% uchaf ond nid y 25% uchaf
- Chwarter 3 Mae'r ysgol ymhlith y 50% isaf ond nid y 25% isaf
- Chwarter 4 Mae'r ysgol ymhlith y 25% isaf

Grŵp Prydau Ysgol am Ddim

Mwy na 15 y cant a hyd at 20 y cant yn gymwys i gael PYD

	Chwarter 4	Chwarter Isaf	Chwarter 3	Canolrif	Chwarter 2	Chwarter Uchaf	Chwarter 1
Cymraeg Ail iaith	0	64		70		74	
Iaith Dramor Fodern		70	70	73		82	
Dylunio a Thechnoleg		81		85	90	91	
Technoleg Gwybodaeth a Chyfathrebu		84		87		91	91
Hanes		75		82	88	88	
Daearyddiaeth		77		82		85	90
Celf a Dylunio		84		89	90	91	
Cerddoriaeth		80	84	84		89	
Addysg Gorrfforol		76		82	82	87	

Mae'r meincnodau wedi cael eu cyfrifo gan ddefnyddio cyfartaledd tair-mlynedd data Prydau Ysgol am Ddim.

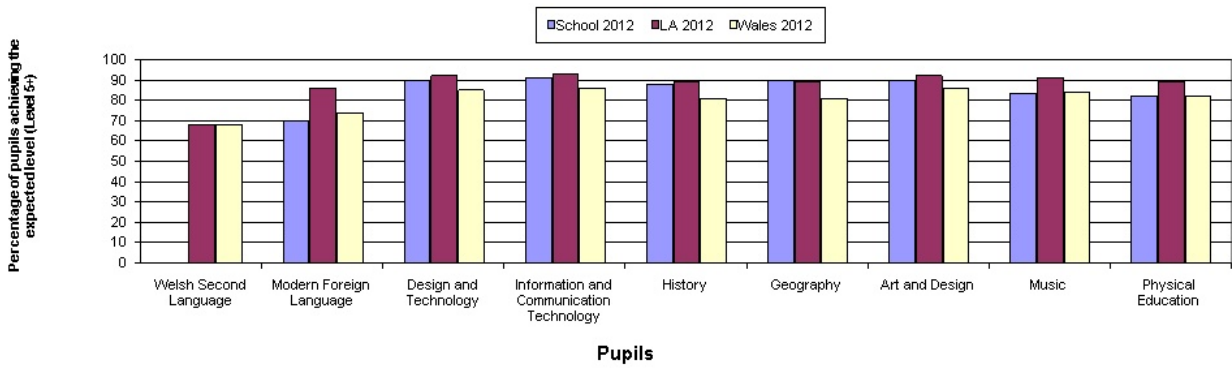
Nodiadau:

- Os nad oedd unrhyw ddisgyblion yn gymwys i'w hasesu mewn pwnc ar gyfer blwyddyn benodol bydd y graff yn terfynu a dangos bwch ar gyfer y flwyddyn honno.

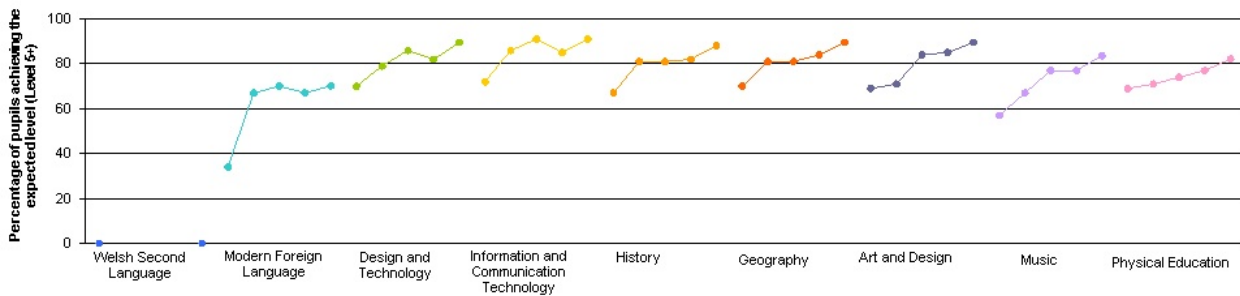
School comparative information: National Curriculum Assessments 2012 with benchmarking
Key Stage 3

Percentage of pupils achieving the expected level (Level 5+)

	Boys			Girls			Pupils		
	School 2012	LA 2012	Wales 2012	School 2012	LA 2012	Wales 2012	School 2012	LA 2012	Wales 2012
Welsh Second Language	0	58	59	0	84	78	0	68	68
Modern Foreign Language	57	81	67	87	92	83	70	86	74
Design and Technology	84	87	79	97	97	91	90	92	85
Information and Communic	89	90	82	93	97	91	91	93	86
History	84	85	76	93	94	87	88	89	81
Geography	86	86	76	93	94	86	90	89	81
Art and Design	84	88	78	97	97	93	90	92	86
Music	76	86	78	93	95	89	84	91	84
Physical Education	81	88	82	83	90	82	82	89	82



School Performance over time (2007 - 2012)



Contextual Information

Benchmarked against schools with a similar percentage of pupils eligible for free school meals.

School's results shown in greyed boxes. Column headings refer to...

- Quarter 1 School is in the top 25 per cent.
- Quarter 2 School is in the top 50 per cent but not the top 25 per cent.
- Quarter 3 School is in the bottom 50 per cent but not the bottom 25 per cent.
- Quarter 4 School is in the bottom 25 per cent.

Free School Meal Group

More than 15 per cent and up to 20 per cent eligible for FSM

	Quarter 4	Lower Quartile	Quarter 3	Median	Quarter 2	Upper Quartile	Quarter 1
Welsh Second Language	0	64		70			74
Modern Foreign Language		70	70	73			82
Design and Technology		81		85	90		91
Information and Communication Technology		84		87			91
History		75		82	88		88
Geography		77		82			85
Art and Design		84		89	90		91
Music		80	84	84			89
Physical Education		76		82	82		87

The benchmarks have been calculated using a three-year average for Free School Meal data.

Notes:

1. If there were no pupils eligible for assessment in a subject for a particular year the graph will discontinue and show a gap for that year.

Disgyblion 15 oed

Nifer y disgyblion 15 oed a oedd ar y gofrestr yn Ionawr 2012 : 42

Canran y disgyblion 15 oed a:

	gofrestrodd am o leiaf un cymhwyster	enillodd drothwy Lefel 1	enillodd drothwy Lefel 2	enillodd drothwy Lefel 2 gan gynnwys TGAU mewn Saesneg neu Cymraeg iaith gyntaf a mathemateg	Dangosydd Pynciau Craidd (2)	Sgôr bwyntiau gyfartalog ehangach fesul disgybl wedi'i chapio (3)	Sgôr bwyntiau gyfartalog eang am bob disgybl
Ysgol 2011/12	100	100	95	60	57	367	718
Ardal ALI 2011/12	100	93	75	55	53	335	525
Cymru 2011/12	99	92	73	51	49	324	465
Ysgol 10/11/12	100	98	76	48	46	340	573
Ysgol 09/10/11	100	96	67	48	45	..	477

Nifer y bechgyn 15 oed a oedd ar y gofrestr yn Ionawr 2012 : 25

Canran y bechgyn 15 oed a:

	gofrestrodd am o leiaf un cymhwyster	enillodd drothwy Lefel 1	enillodd drothwy Lefel 2	enillodd drothwy Lefel 2 gan gynnwys TGAU mewn Saesneg neu Cymraeg iaith gyntaf a mathemateg	Dangosydd Pynciau Craidd (2)	Sgôr bwyntiau gyfartalog ehangach fesul disgybl wedi'i chapio (3)	Sgôr bwyntiau gyfartalog eang am bob disgybl
Ysgol 2011/12	100	100	92	68	64	363	714
Ardal ALI 2011/12	100	92	69	51	49	320	498
Cymru 2011/12	99	90	68	47	45	310	439
Ysgol 10/11/12	100	98	71	45	42	330	544
Ysgol 09/10/11	100	94	58	39	37	..	432

Nifer y merched 15 oed a oedd ar y gofrestr yn Ionawr 2012 : 17

Canran y merched 15 oed a:

	gofrestrodd am o leiaf un cymhwyster	enillodd drothwy Lefel 1	enillodd drothwy Lefel 2	enillodd drothwy Lefel 2 gan gynnwys TGAU mewn Saesneg neu Cymraeg iaith gyntaf a mathemateg	Dangosydd Pynciau Craidd (2)	Sgôr bwyntiau gyfartalog ehangach fesul disgybl wedi'i chapio (3)	Sgôr bwyntiau gyfartalog eang am bob disgybl
Ysgol 2011/12	100	100	100	47	47	374	724
Ardal ALI 2011/12	99	94	81	59	57	349	552
Cymru 2011/12	100	94	78	55	53	338	493
Ysgol 10/11/12	100	99	81	52	51	351	603
Ysgol 09/10/11	100	98	75	57	53	..	516

(1) I gael manylion ar gymhwysterau sydd wedi'u cymeradwyo, sgôr pwyntiau a chyfraniad at y throthwy, gweler y Gronfa Ddata Cymwysterau Cymeradwy Cymru (DAQW) yn <http://www.daqw.org.uk/>

(2) Mae manylion ynglŷn â pha feysydd llafur sydd ym mhob pwnc ar gael yn y nodiadau cyfarwyddyd.

(3) Cyfrifir y sgôr pwyntiau cyfartalog eang wedi'i gapio gan ddefnyddio'r 8 calnlyniad gorau.

(4) Cymhwyster Lefel Mynediad.

(5) Yn gyson a diffiniad Dangosydd Perfformiad Cenedlaethol EDU/002.

(6) Defnyddir ar gyfer holl dablau meincnodi prydau am ddim.

.. Data ddim ar gael.

Pupils aged 15

Number of pupils aged 15 who were on roll in January 2012 : 42

Percentage of pupils aged 15 who:

	entered at least one qualification	achieved the Level 1 threshold	achieved the Level 2 threshold	achieved the Level 2 threshold including a GCSE pass in English or Welsh first language and mathematics	Core Subject Indicator (2)	Average capped (3) wider points score per pupil	Average wider points score per pupil
School 2011/12	100	100	95	60	57	367	718
LA Area 2011/12	100	93	75	55	53	335	525
Wales 2011/12	99	92	73	51	49	324	465
School 10/11/12	100	98	76	48	46	340	573
School 09/10/11	100	96	67	48	45	..	477

Number of boys aged 15 who were on roll in January 2012 : 25

Percentage of boys aged 15 who:

	entered at least one qualification	achieved the Level 1 threshold	achieved the Level 2 threshold	achieved the Level 2 threshold including a GCSE pass in English or Welsh first language and mathematics	Core Subject Indicator (2)	Average capped (3) wider points score per pupil	Average wider points score per pupil
School 2011/12	100	100	92	68	64	363	714
LA Area 2011/12	100	92	69	51	49	320	498
Wales 2011/12	99	90	68	47	45	310	439
School 10/11/12	100	98	71	45	42	330	544
School 09/10/11	100	94	58	39	37	..	432

Number of girls aged 15 who were on roll in January 2012 : 17

Percentage of girls aged 15 who:

	entered at least one qualification	achieved the Level 1 threshold	achieved the Level 2 threshold	achieved the Level 2 threshold including a GCSE pass in English or Welsh first language and mathematics	Core Subject Indicator (2)	Average capped (3) wider points score per pupil	Average wider points score per pupil
School 2011/12	100	100	100	47	47	374	724
LA Area 2011/12	99	94	81	59	57	349	552
Wales 2011/12	100	94	78	55	53	338	493
School 10/11/12	100	99	81	52	51	351	603
School 09/10/11	100	98	75	57	53	..	516

(1) For details on approved qualifications, point scores and contribution to thresholds, please see the Database for Approved Qualifications in Wales (DAQW) at <http://www.daqw.org.uk/>

(2) For information about which syllabuses are included in each subject area see Notes for Guidance.

(3) Average capped wider point scores are calculated using the best 8 results.

(4) Entry Level Qualification.

(5) As defined under the National Performance Indicator EDU/002.

(6) Used for all Free School Meal benchmarking tables.

.. Data not available.

Disgyblion 15 oed

	Canran y disgyblion 15 oed a:		Canran y bechgyn 15 oed a:		Canran y merched 15 oed a:	
	enillodd un CLM (4) neu ragor yn unig	yn gadael addysg amser-llawn heb unrhyw gymhwyster (5)	enillodd un CLM (4) neu ragor yn unig	yn gadael addysg amser-llawn heb unrhyw gymhwyster (5)	enillodd un CLM (4) neu ragor yn unig	yn gadael addysg amser-llawn heb unrhyw gymhwyster (5)
Ysgol 2011/12	0	0.0	0	0.0	0	0.0
Ardal ALI 2011/12	1	0.0	1	0.0	0	0.0
Cymru 2011/12	1	0.4	1	0.5	1	0.4
Ysgol 10/11/12	0	0.0	0	0.0	0	0.0
Ysgol 09/10/11	3	..	5	..	2	..

Disgyblion 17 oed

	Nifer y disgyblion 17 oed a oedd ar y gofrestr yn lonawr 2012: 21		Nifer y bechgyn 17 oed a oedd ar y gofrestr yn lonawr 2012: 9		Nifer y maerched 17 oed a oedd ar y gofrestr yn lonawr 2012: 12	
	Canran y disgyblion 17 oed a gofrestrodd am gyfaint o ddysgu yn gyfartal i 2 lefel A ac yn ennill y trothwy Lefel 3	Sgôr bwyntiau gyfartalog eang am bob disgybl 17 oed	Canran y disgyblion 17 oed a gofrestrodd am gyfaint o ddysgu yn gyfartal i 2 lefel A ac yn ennill y trothwy Lefel 3	Sgôr bwyntiau gyfartalog eang am bob disgybl 17 oed	Canran y disgyblion 17 oed a gofrestrodd am gyfaint o ddysgu yn gyfartal i 2 lefel A ac yn ennill y trothwy Lefel 3	Sgôr bwyntiau gyfartalog eang am bob disgybl 17 oed
Ysgol 2011/12	95	986	100	1155	91	858
Ardal ALI 2011/12	97	818	98	775	96	854
Cymru 2011/12	97	773	96	725	98	813
Ysgol 10/11/12	99	1003	100	1029	98	986
Ysgol 09/10/11	100	921	100	897	100	937

(1) I gael manylion ar gymhwysterau sydd wedi'u cymeradwyo, sgôr pwyntiau a chyfraniad at y throthwy, gweler y Gronfa Ddata Cymwysterau Cymeradwy Cymru (DAQW) yn <http://www.daqw.org.uk/>

(2) Mae manylion ynglŷn â pha feysydd llafur sydd ym mhob pwnc ar gael yn y nodiadau cyfarwyddyd.

(3) Cyfrifir y sgôr pwyntiau cyfartalog eang wedi'i gapio gan ddefnyddio'r 8 calnlyniad gorau.

(4) Cymhwyster Lefel Mynediad.

(5) Yn gyson a diffiniad Dangosydd Perfformiad Cenedlaethol EDU/002.

(6) Defnyddir ar gyfer holl dablau meincnodi prydau am ddim.

.. Data ddim ar gael.

Pupils aged 15

	Percentage of pupils aged 15 who:		Percentage of boys aged 15 who:		Percentage of girls aged 15 who:	
	achieved one or more ELQ (4) only	Left full time education without a qualification (5)	achieved one or more ELQ (4) only	Left full time education without a qualification (5)	achieved one or more ELQ (4) only	Left full time education without a qualification (5)
School 2011/12	0	0.0	0	0.0	0	0.0
LA Area 2011/12	1	0.0	1	0.0	0	0.0
Wales 2011/12	1	0.4	1	0.5	1	0.4
School 10/11/12	0	0.0	0	0.0	0	0.0
School 09/10/11	3	0.0	5	0.0	2	0.0

Pupils aged 17

	Number of pupils aged 17 who were on roll in January 2012: 21		Number of boys aged 17 who were on roll in January 2012: 9		Number of girls aged 17 who were on roll in January 2012: 12	
	Percentage of 17 year old pupils entering a volume equivalent to 2 A levels who achieved the Level 3 threshold	Average wider points score for pupils aged 17	Percentage of 17 year old pupils entering a volume equivalent to 2 A levels who achieved the Level 3 threshold	Average wider points score for pupils aged 17	Percentage of 17 year old pupils entering a volume equivalent to 2 A levels who achieved the Level 3 threshold	Average wider points score for pupils aged 17
School 2011/12	95	986	100	1155	91	858
LA Area 2011/12	97	818	98	775	96	854
Wales 2011/12	97	773	96	725	98	813
School 10/11/12	99	1003	100	1029	98	986
School 09/10/11	100	921	100	897	100	937

(1) For details on approved qualifications, point scores and contribution to thresholds, please see the Database for Approved Qualifications in Wales (DAQW) at <http://www.daqw.org.uk/>

(2) For information about which syllabuses are included in each subject area see Notes for Guidance.

(3) Average capped wider point scores are calculated using the best 8 GCSE results or the vocational equivalent.

(4) Entry Level Qualification.

(5) As defined under the National Performance Indicator EDU/002.

(6) Used for all Free School Meal benchmarking tables.

.. Data not available.